

Tasty

Pattern & Sewing Instructions



A soft toy lobster inspired by kiwa hirsuta, a new species of squat lobster collected in hydrothermal vents of the Pacific-Antarctic Ridge, south of Easter Island in 2004.

designed by Kristen McQuillin
mediatinker.com
March 2006

Materials

0.4 m fake fur with deep pile

0.5 m cotton fabric

polyfil stuffing

quilt batting

thread – matching and contrast

2 beads, clear or matching body fabric

handy, but optional: cooking chopstick for turning and stuffing, thimble

LEGS

(A) legs

1. Sew pintucks at markings
2. Fold in half; seam
3. Clip curves, turn right side out
4. Stuff loosely

(B) legs with claws

1. Sew claw to top of leg
2. Make pintucks at markings
3. Fold in half. Seam starting at claw
4. Clip curves; turn right side out
5. Stuff claw tightly
6. Arrange wads of stuffing at X noted on pattern to form loose, floppy joints

(C • D • E) legs

1. Fold in half; seam
2. Clip seams, turn right side out
3. Stuff each leg to first mark - *note that C is differently jointed than D & E*
4. Sew across mark to form joint
5. Repeat stuffing process for all joints

(F) Plastron

1. Cut quilt batting to fit pattern
2. Sew one layer and batting along top stitch markings with contrast thread
3. Sew back and quilted side together, leaving opening.
4. Turn right side out
5. Slip stitch opening shut

Assembly

1. Arrange legs on back of plastron, as indicated on pattern
 - a. Set A, B & C legs with the seams parallel to the plastron
 - b. Set D & E legs seam side up (perpendicular to the plastron) so the joints bend backwards.
2. Baste legs onto plastron, being careful not to catch quilted front in stitching

Legwarmers

1. Seam pieces, adjusting as necessary to fit legs
2. Turn right side out; set aside.

TAIL

(I) Dorsal side (top)

1. Cut batting to fit pattern
2. Sew one layer and batting along top stitch markings with contrast thread

(I) Ventral side (bottom)

1. Sew pintucks along markings

(G & H) Uropods

1. Cut quilt batting to fit the G & H uropods
2. Sew batting and pieces together
3. Clip curves; turn right side out
4. Sew along top stitch markings with contrast thread

Assembly

1. Pin uropods into place along bottom of tail
2. Stitch ventral and dorsal pieces together across uropods
3. Form small tuck on each side of dorsal piece to align edges with ventral side
4. Sew, leaving opening
5. Clip seams, turn right side out
6. Stuff loosely
7. Slip stitch opening shut



BODY

(J) Carapace

1. Cut quilt batting to fit pattern
2. Sew one layer and batting along top stitch markings with contrast thread
3. Sew back to front, leaving opening
4. Clip curves and seams; turn right side out
5. Slip stitch opening closed

(K) Body

1. Sew pieces together, leaving opening
2. Clip seams; turn right side out
3. Stuff loosely
4. Slip stitch opening shut

ASSEMBLY

Attach Carapace & Tail to Body

1. Whip stitch the carapace to the body along both sides, leaving head and tail sections open.
2. Stitch tail to carapace with strong stitches.

Attach Plastron to Body

1. Align plastron & legs on bottom center of body; pin securely
2. Whip stitch along top point and lower edge
3. Whip stitch between legs, catching edges of leg into stitching to position legs at correct angles

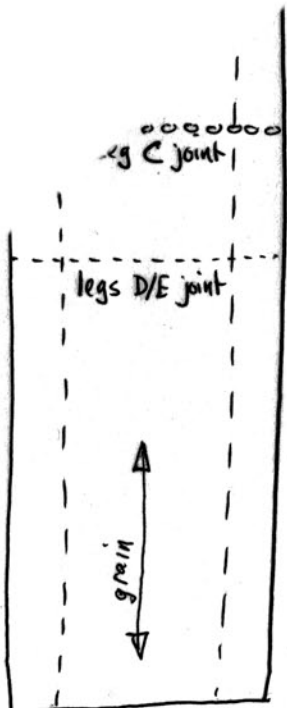
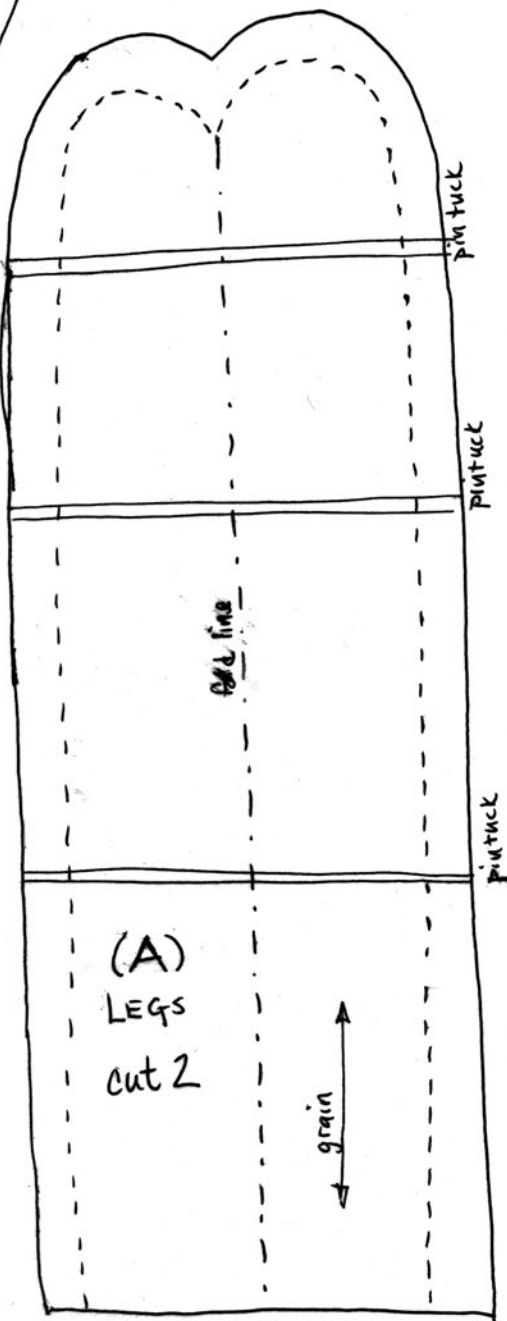
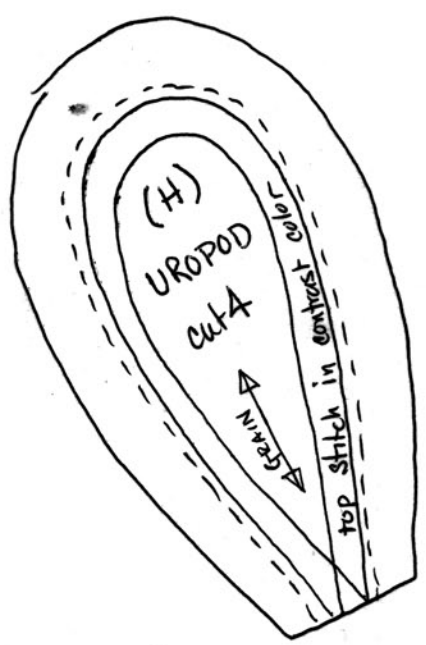
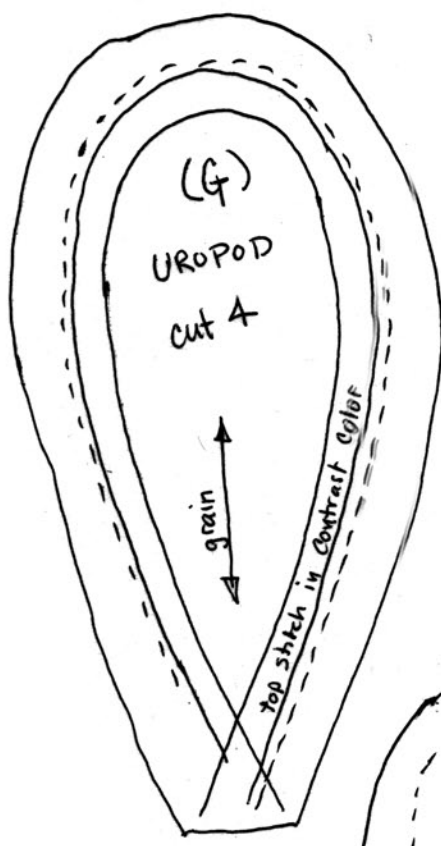
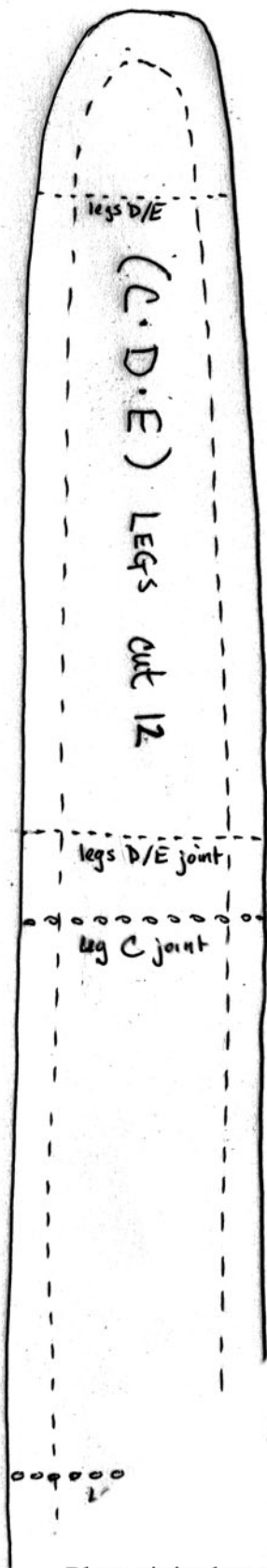


FINISHING

1. Slip legwarmers over C & D legs
2. Sew beads onto carapace as eyes
3. Adjust (A) legs and sew into joints to bend as desired

NOTES

- I tried several materials as antennae, including pipe cleaners, copper wire and fabric, but was unable to find one that suited me. If you come up with something that works, please let me know.
- The blunt end of a long cooking chopstick is invaluable for turning the legs inside out. The thin ends works well to insert stuffing.
- I'm not one for pinning, but pinning the plastron into place before sewing it to the body is essential to keeping it straight.



Please join these pieces along the diagonal to form the full pattern piece.

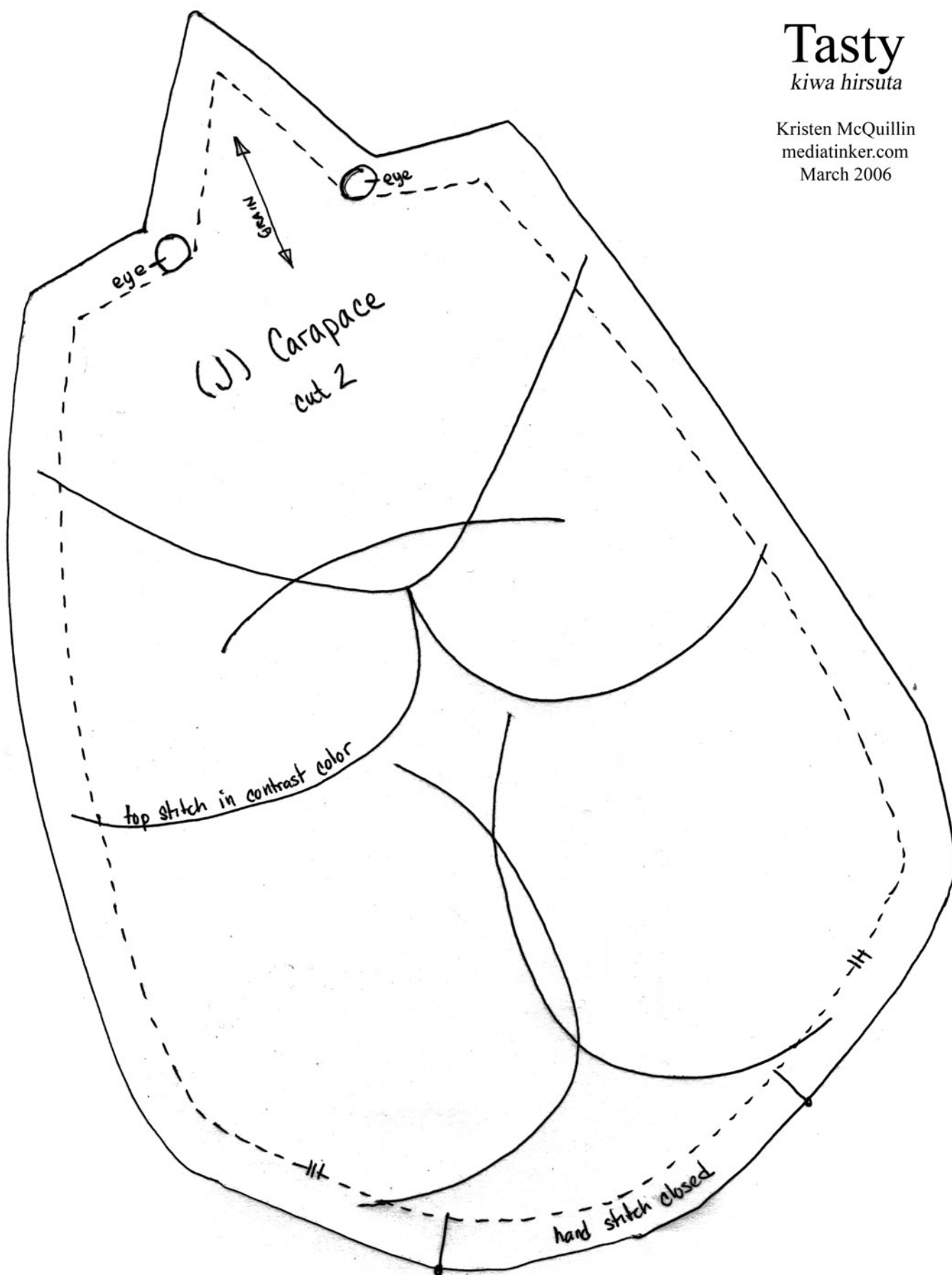
Tasty
kiwa hirsuta

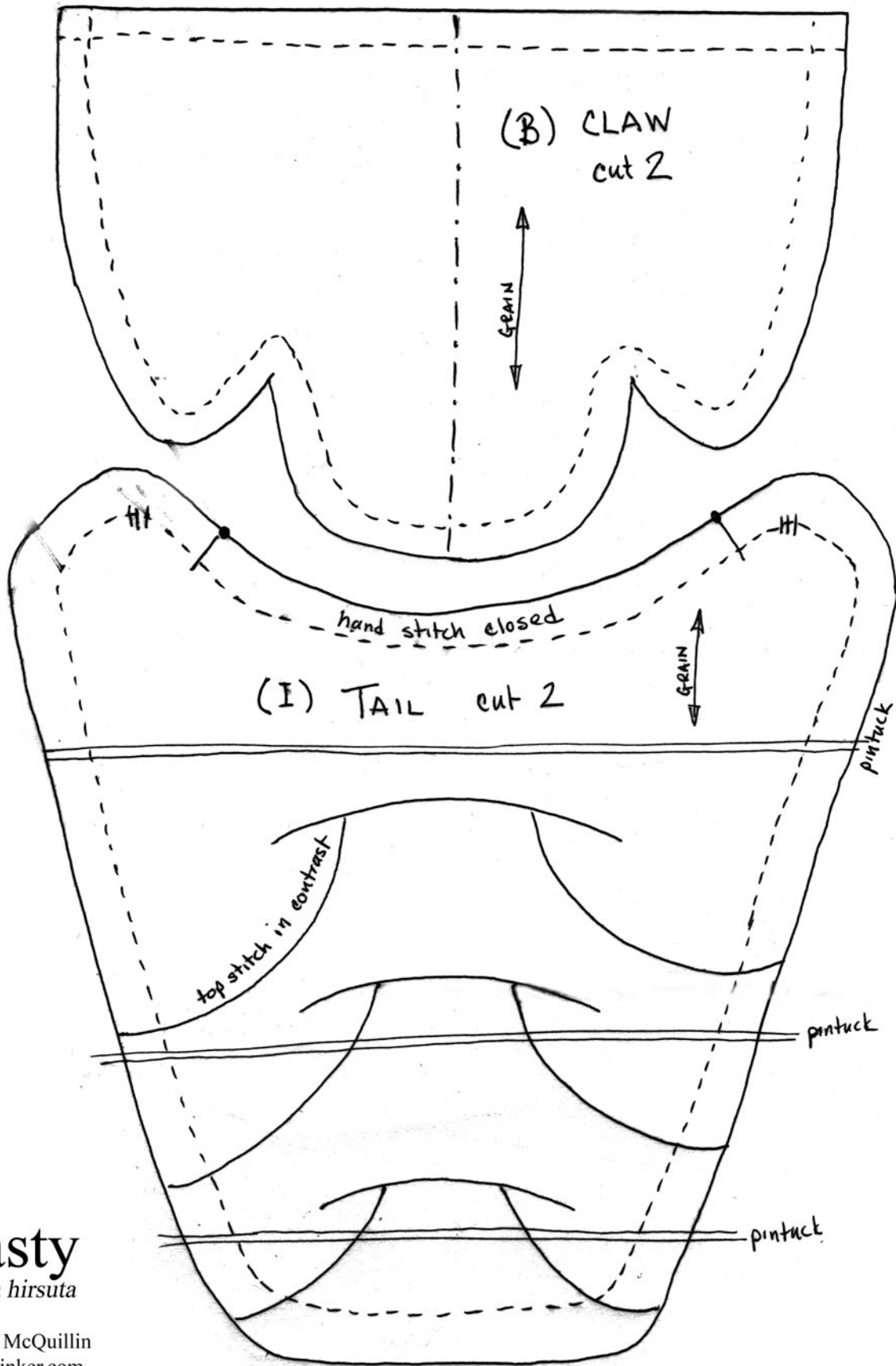
Kristen McQuillin
mediatinker.com
March 2006

Tasty

kiwa hirsuta

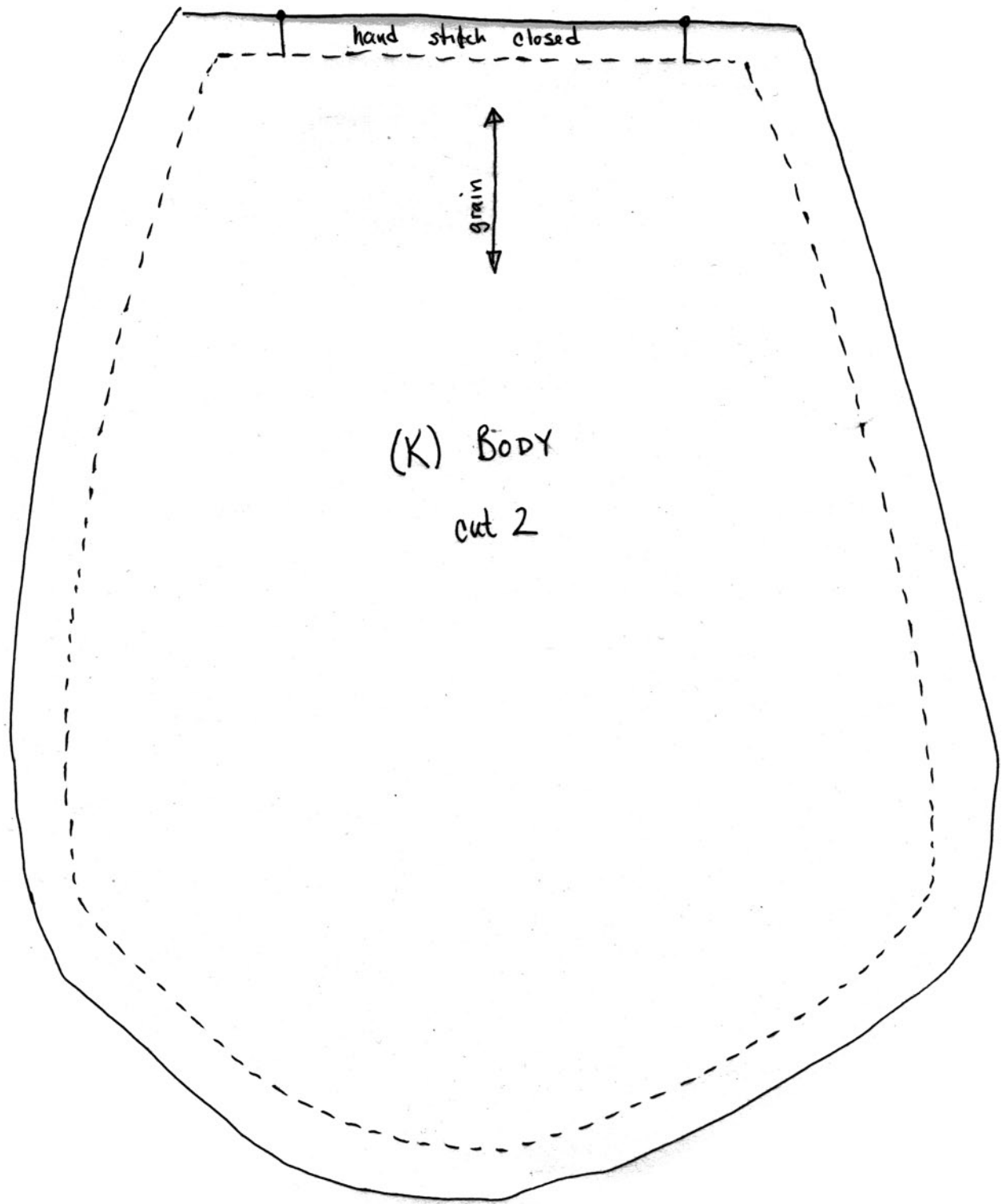
Kristen McQuillin
mediatinker.com
March 2006





Tasty
kiwa hirsuta

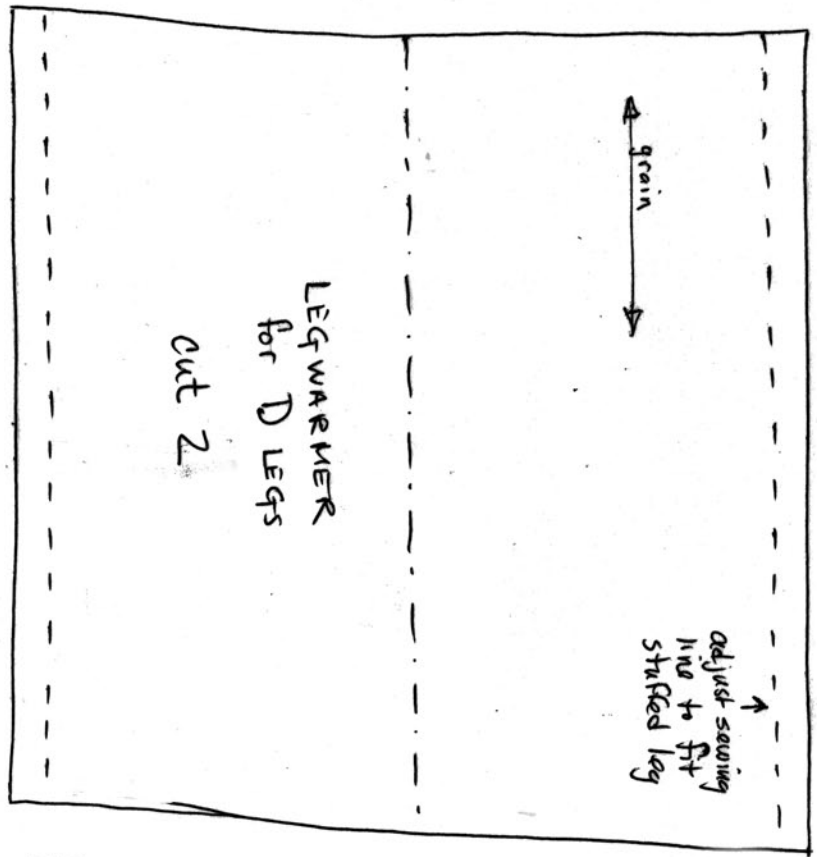
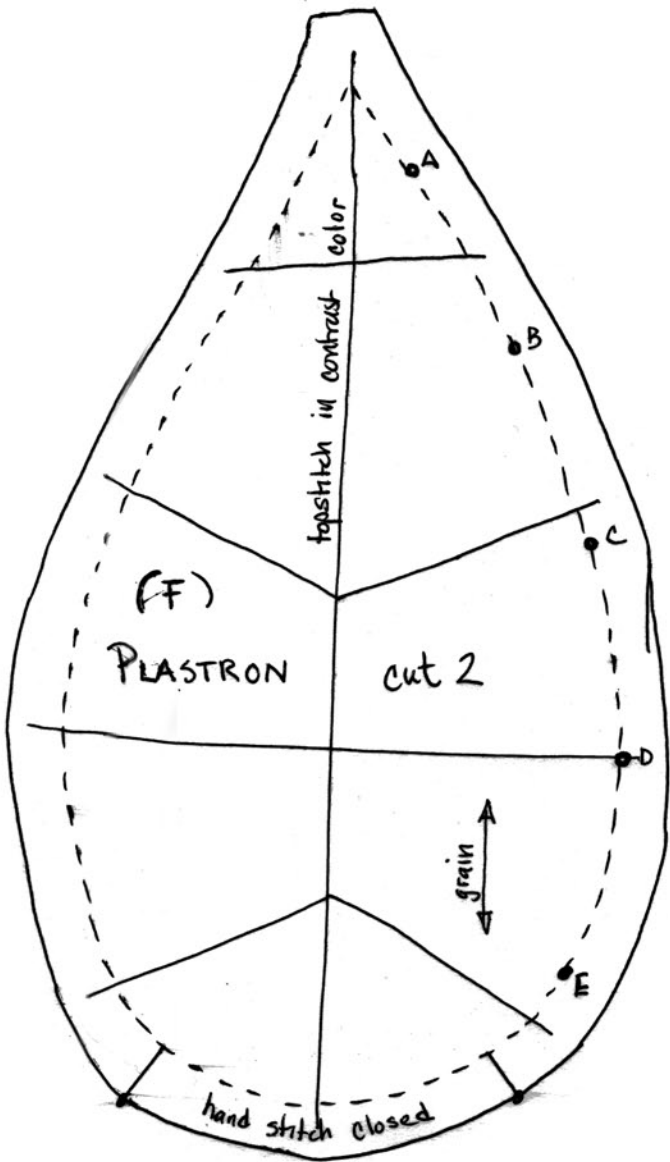
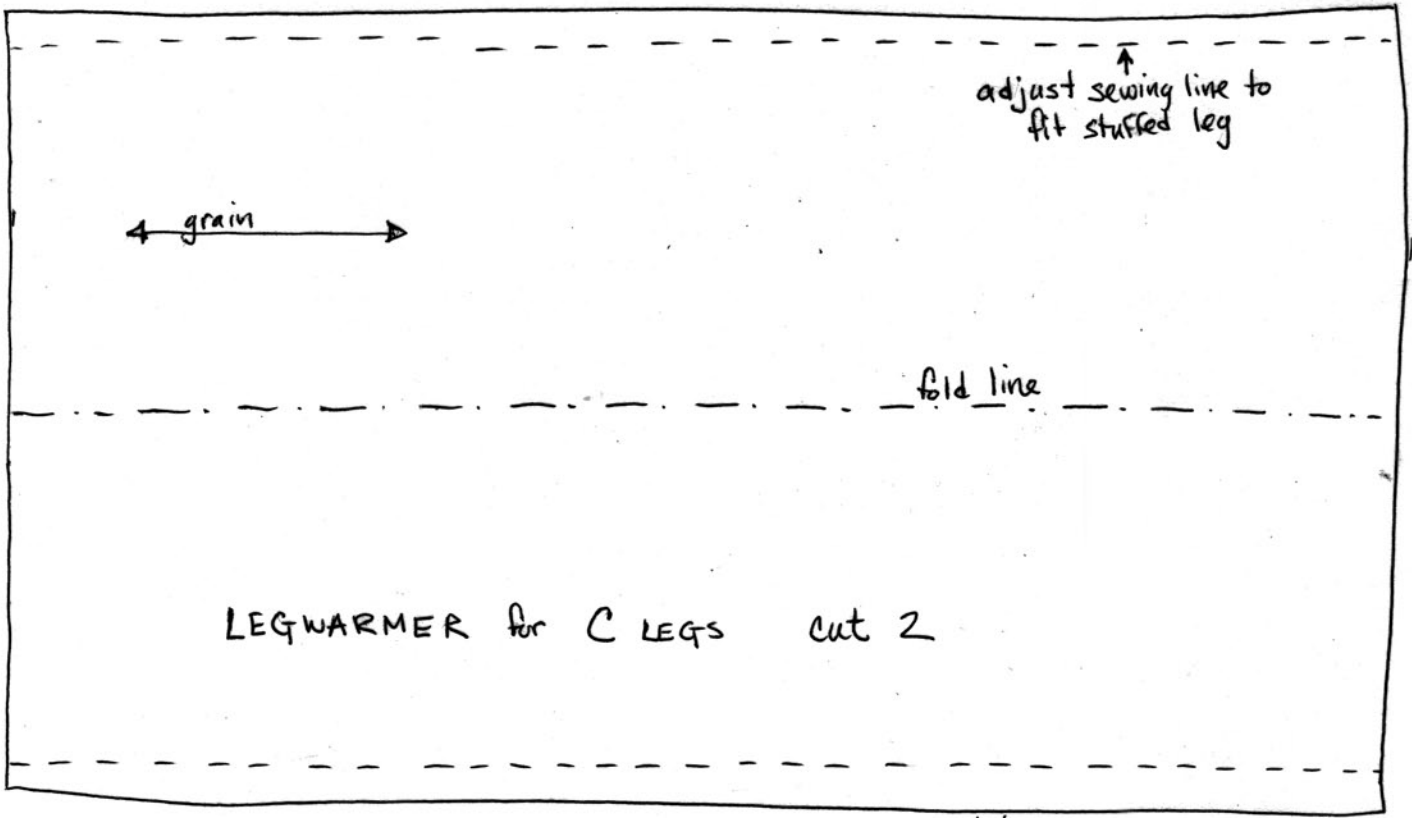
Kristen McQuillin
mediatinker.com
March 2006



Tasty

kiwa hirsuta

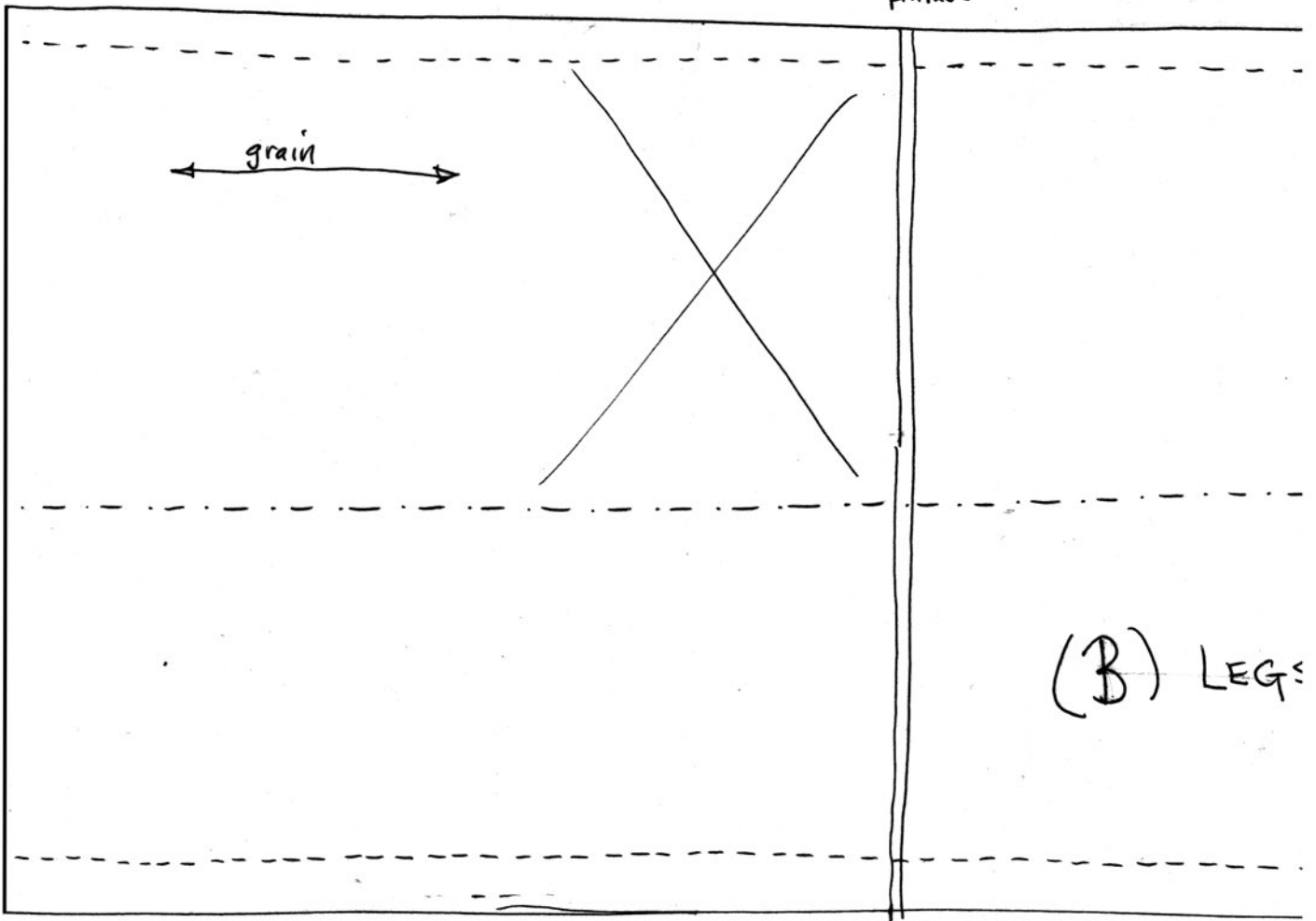
Kristen McQuillin
mediatinker.com
March 2006



Tasty
kiwa hirsuta

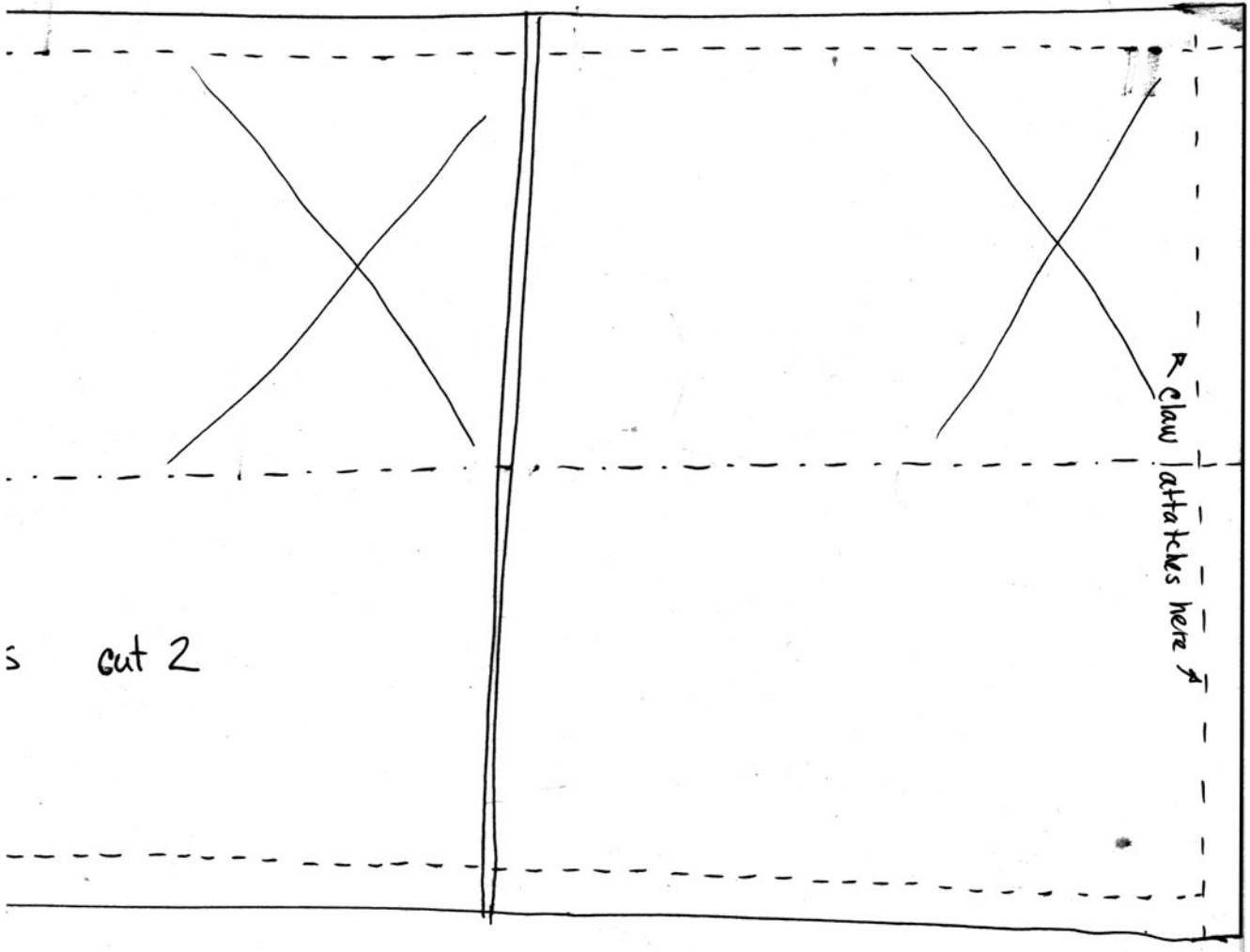
Kristen McQuillin
mediatinker.com
March 2006

printuck



(B) LEGS

Please join these pieces to create the full pattern piece (B)



claw attaches here

cut 2