

Mini Craft Kit

Reduction Printing

This kit contains:

two plastic erasers

one craft knife

four stamp pads

twenty eight printing sheets

one instruction booklet

Introduction

Reduction printing is a way to make multiple color prints in limited edition series. Unlike traditional block printing where each printed color is a separate piece of carved medium, in reduction printing you use only one block. As you work, you build up the colors of your final picture after carving away more and more of the print block. Because you alter the block as you create the next layer of color, the final prints can never be reproduced.

In this kit, you'll work with a rubber eraser as your print block and make two different four-color designs in limited editions of ten prints.



House: complete



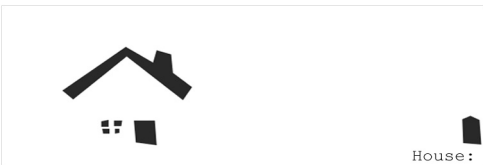
House: Sky Blue



House: Green



House: Blue



House: Black

Print 1

House

This is a simple four-color reduction print, where each new color adds detail to the layer below it.

1. Count out 14 printing sheets. I print at least four more than the number in the final edition, so I have a few spares for the inevitable mistakes. Remember that you can never make more because you must cut down the block to finish the print.
2. Using your craft knife, cut away the area for the clouds as shown in the *House: Sky Blue* image.
3. Print the sky blue ink as many times as you want prints. Allow to dry.
4. Using *House: Green* as a guide, cut away everything that won't be printed in green. This preserves the blue sky and creates a base for the house and tree.
5. Paying close attention to aligning the colors, print over your sky blue layer with the green ink. Print all the sheets and allow to dry.

6. Using *House: Blue* as a guide, cut away the areas that will remain green, keeping what will be printed in blue.

7. Print dark blue over the other colors, paying close attention to color registration. Allow the sheets to dry.

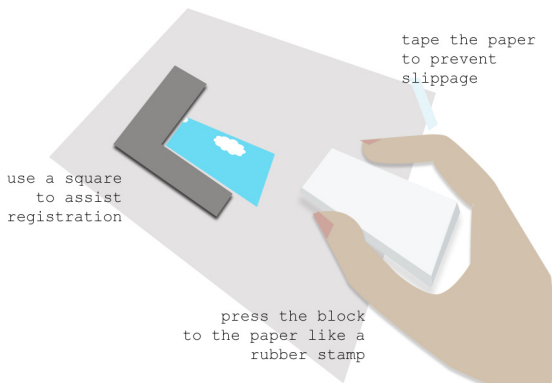
8. With *House: Black* as a guide, cut away the areas that will remain blue, leaving the house details and tree trunk.

9. Print black over the other colors. Allow prints to dry.

A note on Color Alignment

Aligning the colors in a multi-color print can be tricky. If the registration is off, the print may be ruined. With these small blocks, the best way I've found is to use them like rubber stamps.

Fix your paper to the table with tape so that it doesn't move. Use a square to align one corner of the block. Set the block down lightly, then press firmly.





Flower: Sky Blue



Flower: Green



Flower: Blue



Flower: Black

Print 2

Flower

In this reduction print, details are added in multiple colors as the general shape is revealed.

1. Count out 14 printing sheets for your edition of ten prints. Remember that you need to make a few extras to cover any mistakes.

2. Cut away the white area as shown in the *Flower: Sky Blue* image.

3. Print the sky blue ink as many times as you want prints. Allow to dry.

4. Using *Flower: Green* as a guide, cut away the center area of the flower, keeping the petal details and center of the flower.

5. Carefully registering the block, print over the sky blue layer with the green ink. Print all the sheets and allow to dry.

6. Using *Flower: Blue* as a guide, cut away the stem,

leaf, and center areas that will remain green.

7. Print dark blue over the other colors, paying close attention to color registration. Allow the sheets to dry.

8. With *Flower: Black* as a guide, cut away the leaf and flower details that will remain blue.

9. Print black over the other colors. Allow prints to dry.